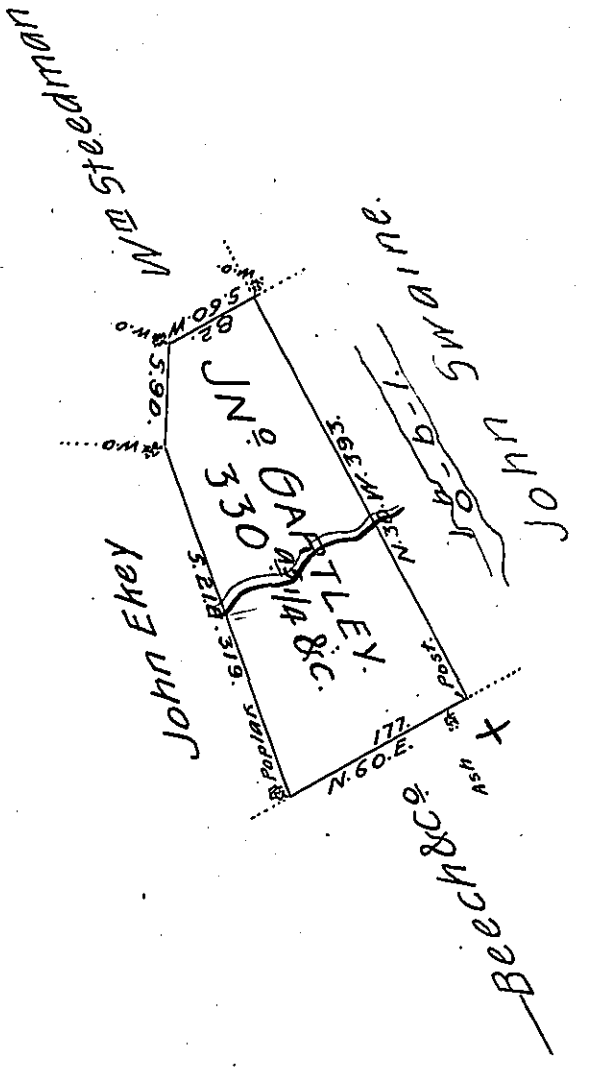


Butler -
Luzerne.



Draft of a tract of land Called _____ Situate in the County of Lu-
 zerne containing three hundred and thirty acres $\frac{1}{4}$ & Allow^e Surv^y
 for John Gartley the 29th day of May 1793 by vertue of a warrant
 dated the 1st day of April 1793.

by ~~SALD~~
~~obliterated.~~

Daniel Brodhead Esq^r }
 Surv^r Gen^l }

IN TESTIMONY that the above is a copy of the original remaining on file in
 the Department of Internal Affairs of Pennsylvania, made
 conformably to an Act of Assembly approved the 16th day of
 February, 1833, I have hereunto set my Hand and caused
 the Seal of said Department to be affixed at Harrisburg,
 this fifth day of January 1905.

George B. Brown
 Secretary of Internal Affairs.